

EZ-POWER

EQUIPMENT

ez-power.co



EZ-CU563

GENERATING SET (TECHNICAL DATA SHEET)

Standard Specifications:

1- Prime Rating:

Unlimited hours usage, with an average load factor of 80% over each 24 hour period. 10% overload is available for 1 hour in every 12 hours operation. 0 overload is permitted on standby power.

2- Standby Rating:

Limited to 500 hours annual usage, with an average load factor of 80% of the published standby power rating over each 24 hour period. Up to 300 hours of annual usage may be run continuously. No overload is permitted on standby power.

3- Engine:

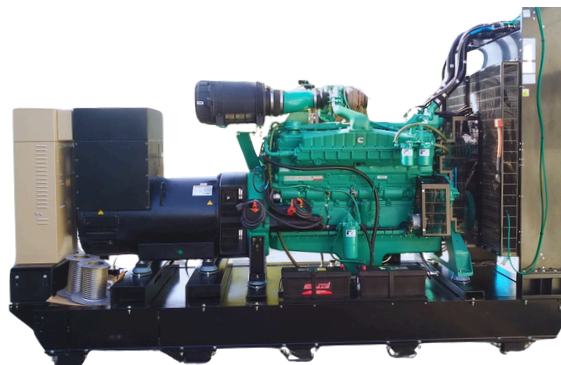
Cummins, including air filters, fuel filters, oil filter, starting motor and charging alternator etc.

4- Alternator Type:

brushless AC alternator

5- Radiator:

50°C, fan protective shroud



Output Rating:

PRIME:		STANDBY:	
60 Hz—1800 Rpm 480 V, 3ph			
512 kVA	409 kW	563 kVA	450 kW

Voltage ranges available: from 380V to 480V (60Hz). De-rating may apply.

ENGINE SPECIFICATIONS

Engine Make	CUMMINS
Engine Model	M15-G8
Type	4 cycle, Inline, Turbocharged and Aftercooled
Bore mm	159
Stroke Model	159
Displacement	18.9
Flywheel Dimensions	SAE0
Battery Charging Alternator	45A, negative ground
Starting Voltage	24V
Fuel System	Direct Injection Cummins PT
Fuel Filter	Spin-on fuel filters with water separator
Lube Oil Filter and Capacity (L)	Spin on full flow filter - 50 Litres

ALTERNATOR SPECIFICATIONS

Alternator Make	Leroy Somer Stamford
Alternator Model	TAL-A47-C HCI544D/S5L1D-C41
Number of Poles	4
Winding Pitch	2/3
Insulation Class - Temp Rise	H
Ingress Protection Rating	IP 23
Excitation System	Self Excited
AVR Model	SX440

COMPLY WITH STANDARDS

ISO 3046, BS 5514, DIN 6271, NEMA-MGI, DIN EN, BS 5000, IEC 60034, IEC 60947-2

ALTERNATOR OPERATING DATA

Over speed	2250 rpm
Voltage Regulation	+ 1%
Harmonic Coefficient THF	< 3.5%
Tel. influence TIF	< 50
Cooling air flow	1.035m ³ / Sec



**LEROY
SOMER**

STAMFORD
power generation



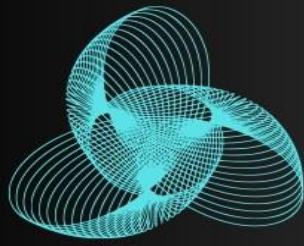
+966 556660440



Riyad | Jeddah | Tabuk



Info@Ez-power.co



EZ-POWER

EQUIPMENT

ez-power.co



Standard Specifications:

6- Fuel Tank:

Capacity of fuel tank is for 8-10 hours running
Built in fuel tank up to 800 kVA

7- Circuit Breaker:

LS

8- Control system alarms:

- Over and Under Speed
- Low and High Battery Volt.
- Start and Stop Failure
- Over Current
- Under / Over Generator Voltage
- Low Oil Pressure
- Emergency stop
- High engine temperature

9- Warranty policy:

- EZ POWER products has a warranty for 12 Months or 1000 hours whichever occurs first against any manufacturing defects
- Wearing parts (filters), incorrect man made operation, maintenance failures are excluded from the warranty policy

Control System:

Large back-lit text display

Multiple display languages

DSENET expansion compatible

Data logging facility

Fully configurable via PC using USB communication

Front panel configuration

Efficient power save mode

3 phase generator sensing

Accumulated power monitoring (kWh, kVA h, kVAr h)

Generator/load current monitoring and protection (kW)

Breaker control via fascia buttons

Fuel and start outputs, configurable using can

4 configurable DC outputs

4 configurable analogue/digital inputs

Automatically transfers between mains (utility) and generator

Increased input and output expansion capability via dseNET

IP65 rating (with optional gasket) offers increased resistance to water ingress

Digital inputs; Analogue Inputs



DSE 6120

AUTO START & AUTO MAINS
FAILURE CONTROL

Dimensions:

Type	Length (mm)	Width (mm)	Height (mm)	Fuel Tank (L)	Weight (KG)
OPEN	3505	2005	2310	1060	3900
CLOSED	5205	1824	2817	1230	5393

Note: The following dimensions are for preliminary guidance. For more detailed and accurate dimensions, please refer to the General Arrangement Drawing (GAD).



Acoustic Enclosure Specifications:

Enclosure Type	Acoustic & Weather Proof
Drainage Provision	Fuel and Water Drainage
Transportation	Tested Single Point Lifting Facility & Forklift Pockets
Ingress Protection Rating	IP 23
Lifting	ISO Standard Lifting
Canopy RAL Color	TAL 9010
Base frame RAL Color	RAL 9011
Noise Pressure level @ 7m 86.2 dB(A)	



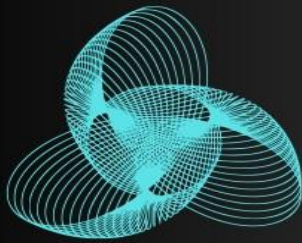
+966 556660440



Riyad | Jeddah | Tabuk



Info@Ez-power.co



EZ-POWER EQUIPMENT

ez-power.co



Engine:



COOLPAC PERFORMANCE DATA

Cooling System Design	Air-Air Charge Cooled
Coolant Ratio	50% ethylene glycol; 50% water
Coolant Capacity (L)	93
Limiting Ambient Temp.	50 Degree Celsius
Fan Power Kw	15
Cooling System Air Flow (m3/s)	9.91
Air Cleaner Type	Normal duty

FUEL CONSUMPTION 1500 (50 HZ)

Fuel Consumption @ 110%	121
Fuel Consumption @ 100%	107
Fuel Consumption @ 75%	82
Fuel Consumption @ 50%	57
Fuel Consumption @ 25%	30

Optional configurations:

Engine accessories:

- ☐ Heavy-duty air filter
- ☐ Coolant heater
- ☐ Lubricant oil heater
- ☐ Fuel and Water Separator
- ☐ Lube oil rotary pump

Alternator And Accessories:

- ☐ Leroy somer/stamford
- ☐ Anti condensation heater
- ☐ PMG + AVR ◇ Double bearing
- ☐ alternator High voltage _____kV
- ☐ RTDs for Bearing and winding

Cooling System:

- ☐ 55 degree Radiator
- ☐ Remote Radiator

Control System:

- ☐ AMF
- ☐ Parallel
- ☐ Practical type in low temperature environment
- ☐ Control Screen Heater
- ☐ Remote Annunciators
- ☐ Other (ComP, DEIF)

Circuit Breaker:

- ☐ 3/4 poles
- ☐ Fixed/handcart type
- ☐ Electric mechanism

Automatic Transfer Switch (ATS):

- ☐ ATS cabinet
- ☐ Contractor type ATS
- ☐ Motorized changeover type ATS

Start Battery:

- ☐ Nickel-cadmium battery
- ☐ Maintenance-free battery
- ☐ Battery charger and selector switch
- ☐ Charging current meter

External Fuel Tank:

- ☐ Single /double wall fuel tank (500-5000 L)
- ☐ Fuel Transfer pump

Exhaust Muffler:

- ☐ Residential grade
- ☐ Critical grade
- ☐ Hospital grade

Available for voltages :

- ☐ 400/230V, 480/277V, 380/220V, 440/254V, 416/240V, 220/127V, 208/120V



+966 556660440



Riyad | Jeddah | Tabuk



Info@Ez-power.co