

# EZ-POWER

## EQUIPMENT

ez-power.co



# EZ-1880

## GENERATING SET (TECHNICAL DATA SHEET)

### Standard Specifications:

#### 1- Prime Rating:

Unlimited hours usage, with an average load factor of 80% over each 24 hour period. 10% overload is available for 1 hour in every 12 hours operation. 0 overload is permitted on standby power.

#### 2- Standby Rating:

Limited to 500 hours annual usage, with an average load factor of 80% of the published standby power rating over each 24 hour period. Up to 300 hours of annual usage may be run continuously. No overload is permitted on standby power.

#### 3- Engine:

Perkins, including air filters, fuel filters, oil filter, starting motor and charging alternator etc.

#### 4- Alternator Type:

brushless AC alternator

#### 5- Radiator:

50°C, fan protective shroud

### Output Rating:

#### PRIME:

60 Hz—1800 Rpm 480 V, 3ph

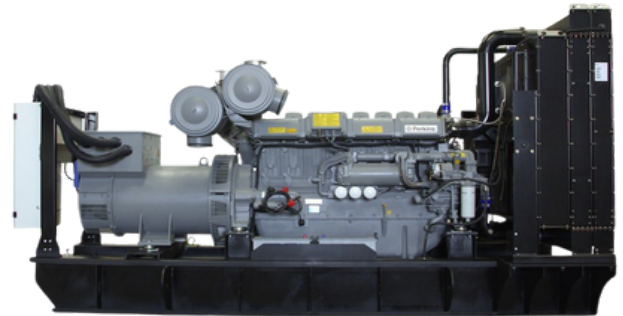
1710kVA

1368 kW

#### STANDBY:

1880kVA

1504kW



### ENGINE SPECIFICATIONS

Engine Make	PERKINS
Engine Model	4012-46TAG3A
No. of Cylinders	12 60° Vee form
Cycle	4 Stroke
Aspiration	Turbocharged & air to air charged cooled
Cooling Method	Water cooled
Governing Type	Electronic
Governing Class	G2 - ISO 8528 Part 1
Compression Ratio	13:1
Displacement	45.842 litres
Bore/Stroke	160 x 190 mm
Dynamic Charging Alternator	40AMP, 24V

### ALTERNATOR SPECIFICATIONS

Alternator Make	AQT   Leroy Somer   STAMFORD
Alternator Model	AQT   LSA51.2 S5   S7L1D-E41
Number of Poles	4
Number of Winding Leads	6/12
Type of Bearing	Single Bearing
Insulation Class - Temp Rise	Cont. H - 125/40 °C
Ingress Protection Rating	IP 23
Excitation System	AREP + PMI
AVR Model	D 510C

### Comply with Standards

ISO 3046, BS 5514, DIN 6271, NEMA-MGI, DIN EN, BS 5000, IEC 60034, IEC 60947-2

### Alternator Operating data

Over speed	2250 rpm
Voltage Regulation	+ 0.5%
Harmonic Coefficient THF	< 2%
Tel. influence TIF	< 50
Cooling air flow	2.5 m3/ Sec

### Powered By:



Diesel Generator



LEROY-SOMER



+966 556660440



Riyad | Jeddah | Tabuk



Info@Ez-power.co

## Standard Specifications:

### 6- Circuit Breaker:

3 pole LS MCCB

### 7- Control system alarms:

- Over and Under Speed
- Low and High Battery Volt.
- Start and Stop Failure
- Over Current
- Under / Over Generator Voltage
- Low Oil Pressure
- Emergency stop
- High engine temperature

### 8- Warranty policy:

- **AQT GENERATOR** products has a warranty for 12 Months or 1000 hours whichever occurs first against any manufacturing defects
- Wearing parts (filters), incorrect man made operation, maintenance failures are excluded from the warranty policy

## Control System:

Large back-lit text display

Multiple display languages

DSENET expansion compatible

Data logging facility

Fully configurable via PC using USB communication

Front panel configuration

Efficient power save mode

3 phase generator sensing

Accumulated power monitoring (kWh, kVAh, kVArh)

Generator/load current monitoring and protection (kW)

Breaker control via fascia buttons

Fuel and start outputs, configurable using can

4 configurable DC outputs

4 configurable analogue/digital inputs

Automatically transfers between mains (utility) and generator

Increased input and output expansion capability via dsenet

IP65 rating (with optional gasket) offers increased resistance to water ingress

Digital inputs; Analogue Inputs



### DSE6110 MKII

AUTO START & AUTO MAINS  
FAILURE CONTROL

## Dimensions:

Type	Length (mm)	Width (mm)	Height (mm)	Fuel Tank (L)	Weight (KG)
OPEN	5170	2275	2875	NA*	11500
CLOSED	9000	2350	3850	NA*	18500

**Note:** The following dimensions are for preliminary guidance. For more detailed and accurate dimensions, please refer to the General Arrangement Drawing (GAD).

## Acoustic Enclosure Specifications:

Enclosure Type	Acoustic & Weather Proof
Drainage Provision	Fuel and Water Drainage
Transportation	Tested Single Point Lifting Facility & Forklift Pockets
Ingress Protection Rating	IP 23
Lifting	ISO Standard Lifting
Canopy RAL Color	TAL 9010
Base frame RAL Color	RAL 9011
Noise Pressure level @ 7m	87 dB(A)



+966 556660440

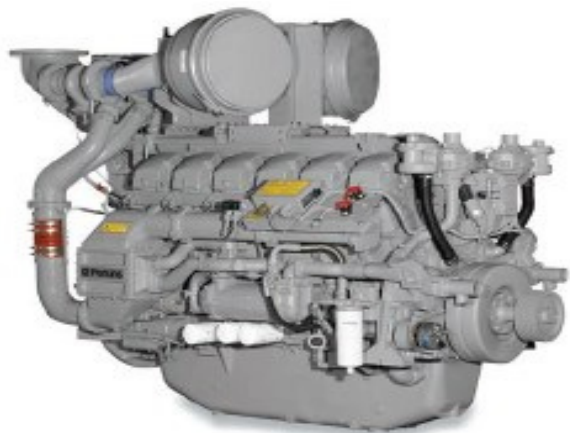


Riyad | Jeddah | Tabuk



Info@Ez-power.co

## Engine:



Perkins heavy duty high performance industrial type diesel engine.

### COOLING SYSTEM

Total Coolant Capacity (L)	210 L
Cooling Fan Air Flow	1920 m3/ min
Radiator Fan Load	64 kW
Heat Radiation to Room (PRP)	96 Kw
Heat Radiation to Room (ESP)	107 kW

### LUBRICATION SYSTEM

Oil Filter Type	Spin-On Full Flow
Total Oil Capacity	177 L
Oil Type	API-CH-4 or ACEA E5

### EXHAUST SYSTEM

Muffler Type	Industrial Grade
Max. Back Pressure	5 kPa
Exhaust Gas Flow (PRP/ESP)	320 m3/ min
Exhaust Gas Temperature	< 455 0C

### FUEL SYSTEM

Recommended Fuel	Class A2 Diesel
Fuel Consumption Standby	405 L/hr
Fuel Consumption 100% PRP	307 L/hr
Fuel Consumption 75% PRP	310 L/hr
Fuel Consumption 50% PRP	275 L/hr

### AIR SYSTEM

Air Filter Type	PowerCore
Combustion Air Flow (PRP)	100 m3/min
Combustion Air Flow (ESP)	118 m3/min
Max Air Filter Intake Restriction	4 kPa

## Optional configurations:

### Engine accessories:

- ☐ Heavy-duty air filter
- ☐ Coolant heater
- ☐ Lubricant oil heater
- ☐ Fuel and Water Separator
- ☐ Lube oil rotary pump

### Alternator And Accessories:

- ☐ Leroy somer/stamford
- ☐ Anti condensation heater
- ☐ PMG + AVR ◇ Double bearing
- ☐ Alternator High voltage \_\_\_\_\_kV
- ☐ RTDs for Bearing and winding

### Cooling System:

- ☐ 55 degree Radiator
- ☐ Remote Radiator

### Control System:

- ☐ AMF
- ☐ Parallel
- ☐ Practical type in low temperature environment
- ☐ Control Screen Heater
- ☐ Remote Annunciators
- ☐ Other (Comp, DEIF)

### Circuit Breaker:

- ☐ 3/4 poles
- ☐ Fixed/handcart type
- ☐ Electric mechanism

### Automatic Transfer Switch (ATS):

- ☐ ATS cabinet
- ☐ Contractor type ATS
- ☐ Motorized changeover type ATS

### Start Battery:

- ☐ Nickel-cadmium battery
- ☐ Maintenance-free battery
- ☐ Battery charger and selector switch
- ☐ Charging current meter

### External Fuel Tank:

- ☐ Single /double wall fuel tank (500-5000 L)
- ☐ Fuel Transfer pump

### Exhaust Muffler:

- ☐ Residential grade
- ☐ Critical grade
- ☐ Hospital grade

### Available for voltages :

- ☐ 400/230V, 480/277V, 380/220V, 440/254V, 416/240V, 220/127V, 208/120V

De-rating may apply.

